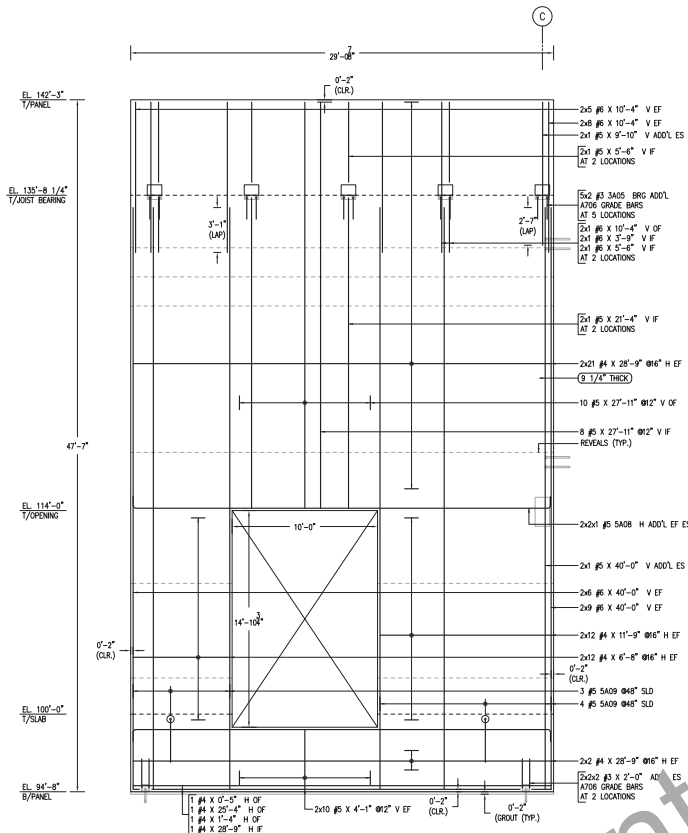
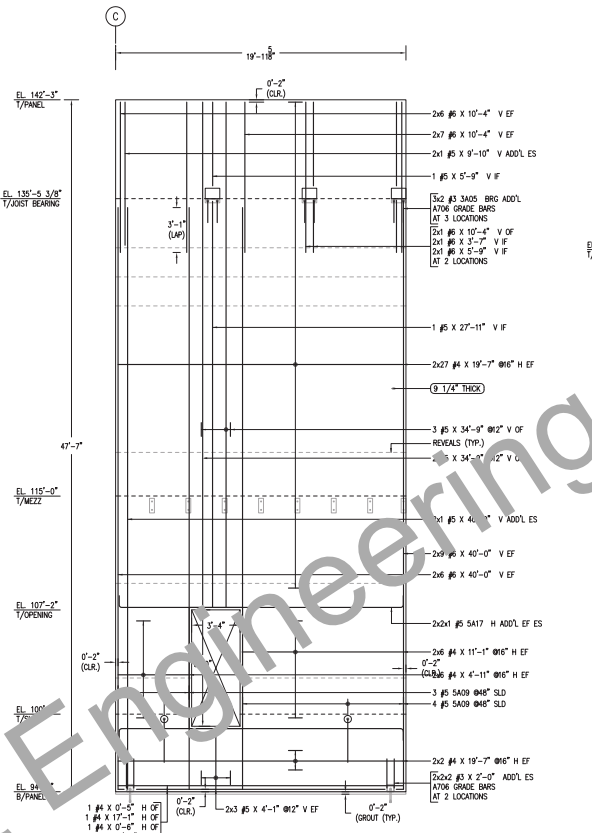


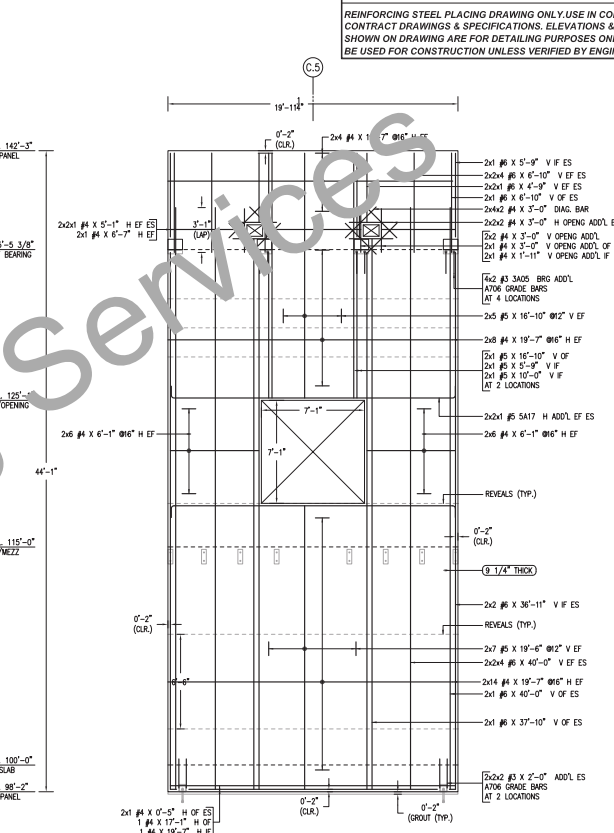
**NOTICE**  
 SHORTAGES, IMPROPER FABRICATION OR CLAIMS FOR ANY OTHER REASON MUST BE REPORTED TO THIS COMPANY WITHIN 10 DAYS FROM ORIGINAL DELIVERY. THIS COMPANY ALSO RESERVES THE RIGHT TO FIELD INSPECT MATERIALS PRIOR TO REPLACEMENT OR RECONDITIONING OF MATERIALS AND WILL NOT BE LIABLE FOR CHARGES FROM WORK DONE IN THE FIELD WITHOUT PRIOR AUTHORIZATION FROM THIS COMPANY.  
 REINFORCING STEEL PLACING DRAWING ONLY USE IN CONJUNCTION WITH CONTRACT DRAWINGS & SPECIFICATIONS. ELEVATIONS & DIMENSIONS SHOWN ON DRAWING ARE FOR DETAILING PURPOSES ONLY AND SHOULD NOT BE USED FOR CONSTRUCTION UNLESS VERIFIED BY ENGINEER OR CONTRACTOR.



**ELEVATION-P3**  
 1/4"=1'-0"  
 SDR: T1.0, T2.0, T3.0 & T4.5

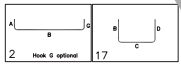


**ELEVATION-P4**  
 1/4"=1'-0"  
 SDR: T1.0, T2.0, T3.0 & T4.5



**ELEVATION-P5**  
 1/4"=1'-0"  
 SDR: T1.0, T2.0, T3.0 & T4.5

Sheet Number	REV	DATE	BY	CHK	DESCRIPTION
100	1	12-10-17	JM	JK	ISSUED FOR PERMIT
100	2	12-10-17	JM	JK	REVISIONS
100	3	12-10-17	JM	JK	REVISIONS
100	4	12-10-17	JM	JK	REVISIONS



**REFERENCE DRAWINGS**  
 FOR AREA-A KEY PLAN & TYPICAL DETAILS REFER DRAWING #R01  
 REBAR DETAIL OF AREA-A PANEL-P1 & P2 REFER DRAWING #R02  
 REBAR DETAIL OF AREA-A PANEL-P6 TO P8 REFER DRAWING #R04  
 REBAR DETAIL OF AREA-A PANEL-P9, P10 & P12 REFER DRAWING #R05  
 REBAR DETAIL OF AREA-A PANEL-P16 TO P17 REFER DRAWING #R06  
 REBAR DETAIL OF PANEL-P4B TO P5D REFER DRAWING #R07

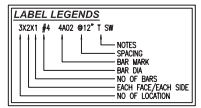
**LAP NOTES:**  
 LAP VALUES AS PER SHEET NO. 13.0 & 35.1

CLASS B LAP 4000 PSI FOR PANEL			CLASS B LAP 5000 PSI FOR PANEL		
SIZE	TOP	OTHERS	SIZE	TOP	OTHERS
#3	24"	19"	#3	22"	17"
#4	32"	25"	#4	29"	22"
#5	40"	31"	#5	36"	28"
#6	48"	37"	#6	43"	33"
#7	70"	54"	#7	63"	49"
#8	90"	62"	#8	72"	55"
#9	91"	70"	#9	81"	63"
#10	102"	79"	#10	91"	70"
#11	113"	87"	#11	101"	78"

**REBAR GRADE 60E ASTM A-615**

SPLICES USED		ABBREVIATIONS		BAR MARK SIZE EQUIVALENT	
CLASS B 4,000 psi UNO				Imperial	Soft Metric
TOP BARS	OTHER BARS	ADD'L	= Additional	#3	#10
#3	#3	CONC	= Concrete	#4	#13
#4	#4	CONT	= Continuous	#5	#16
#5	#5	EMGR	= Engineer	#6	#19
#6	#6	EL	= Elevation	#7	#22
#7	#7	ES	= Each face	#8	#25
#8	#8	H	= Horizontal	#9	#29
#9	#9	S/D	= Slight Downward	#10	#32
#10	#10	IF	= Inner face	#11	#36
#11	#11	OF	= Outer face		
		B/PANEL	= Bottom of panel		
		T/SLAB	= Top of slab		
		T/PANEL	= Top of panel		
		UNO.	= Unless noted otherwise		
		TYP.	= Typical		

FOR APPROVAL



**NOTES:**  
 1. BOTTOM OF PANEL REFER ELEVATION  
 2. TOP OF PANEL REFER ELEVATION  
 3. TOP OF SLAB REFER ELEVATION  
 4. COVER DETAILS:  
 FOR PANEL: SIDE, TOP & BOTTOM = 2"  
 FACE = 3/4"  
 FOR PANEL TIES: FACE = 1" & SIDE = 2"  
 5. STOCK LENGTH USED IS 40'-0"

REV	NO	DATE	APPROVAL	SENT FOR	REV	NO	DATE	SENT FOR
0	11.04.21							